



Matunkha Centre - Annual Report 2025

Alice Chumbi , Alick Harawa, Anthony Munthali, Beatrice Chawinga, Blessings Chirwa, Brave Nyirendah, Chifundo Gondwe, Deliwe Mponda , Gibson Kaira, Glynwell Mtumbuka, Goodson Chavula, Harry Chirwa, Harvey Gondwe, Hastings Kapira, Hestings Kapira, Ineke Selles, Iris Ngwira, James Chirambo, Joshua Nkhoma, Kondwani Mhango, Kondwani Mponda, Lameck Chisiza, Lazarous Kasambala, Lyson Ngulube, Mable Tembo, Mabvuto Chatumbwa, Maria Lipikwa, Martha Mkandawire, Martha Nyirenda, Matandalo Gondwe, Maureen Sichinga, Mercy Lusale, Molley Mhango, Mwala Kayange, Nyasulu Happy, David, Ojesi Banda, Overton Kondowe, Paul Mfune, Peter Manyala, Peter Tengani, Phales Tchereko, Philip Soko, Racksoni Chawinga, Robert Munthali, Rufus Nyasulu, Ryimon Phiri, Salomy Kawonga, Sam Chirambo, Stanwell Mbale, Stellah Ngwimbi, Steven Mfune, Thomas Mwabuwira, Thomas Mwale, Tiem Selles, Tiwonge Munthali, Tiyezge Ngwira , Vinyeru Munthali, Watson I.M. Malanga, William Tchuwa, Willis Chipeta, Winald Kayange, Wisdom Kamanga, Wisdom Kachali



About Matunkha Centre

3



HEALTH

Palliative Home Based Care | Children with disabilities | Moringa Garden |
Biopsies Screening | HIV Testing & Counselling | Cervical Cancer Services |
Prevention Mother To Child Transmission | Youth Clubs

4



HOPE & DIGNITY

Community Welfare | Schoolfeeding & ECD Services |
Livestock Management & Food Security

12



EDUCATION & SKILLS DEVELOPMENT

Matunkha CBCC | Tenthere Primary School | Secondary
Scholarship Fund | Youth Skills Orientation Program |
Craft & Trade Program | Vocational Training Centre

15



Mbiriwisi Water System

Mbiriwizi Mulimi wa Njuchii

21



Special Projects

Christmas Parcels | Loan Fund | Nyika Trips: Staff
& Standard 7 | 30th Celebrations | Hunger Relief
Program | Classroom upgrades & Teachers
Staffroom

23



Volunteers Facilities

29



Transport

30



FACILITIES

31



Administration

33



Board & Management Organizational Chart

34



About Matunkha Centre

14,500 Beneficiaries

Internationally, the country Malawi has been known for many years as *'the warm heart of Africa'*, because of its open, welcoming and friendly communities. People who've come to know the Matunkha Centre in Rumphi District recognize it in a similar advertising way as *'the green heart of Rumphi'* because of its transparent, committed, participatory and sustainable approaches.

The chi-Tumbuka meaning of matunkha is *'source of living water, spring'*. The name was accepted in the year 2000 when the Mbiwirizi Water Scheme had started to transform the area.

Over the past 30 years the Centre has played a significant role in facilitating (transformational) development in cooperation with the mainly Christian communities of Rumphi-Central/West and Mzimba-North.

As a non-profit NGO with Christian signature the Matunkha Centre continues undertaking programs in the area's of Health, Education, Child-Care and Agriculture.



Mirroring a God-fearing way of living, Matunkha intends to be as a tree planted by the rivers of water, that brings forth its fruit in its season, whose leaf also shall not wither and whatever he does shall prosper (Psalm 1 vs 3)



53 FTE

- ❖ 9 Women
- ❖ 44 Men
- ❖ 10 Craft Apprentices
- ❖ 15,060 working days
- ❖ 826 leave days
- ❖ 208 sick days
- ❖ Sick Leave : 1.4 %



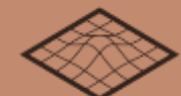
€ 182,300

- ❖ Masana Wa Africa
- ❖ Matunkha NI
- ❖ Many other donors & visitors



14,500

- ❖ 19 Community Based Organizations
- ❖ In every CBO volunteers as our contacts



- ❖ Matunkha Centre : 10 Hectare
- ❖ Protected forest : 32 Hectare
- ❖ Catchment area : 130 km²



HEALTH PROGRAMS

Palliative Home Based Care

Providing high quality and personal health care to people with a palliative health situation
(palliative = a chronic disease)

€ 7.50 = MK 23,150
Per home visit



Likuni Phala
(a nutritional porridge)
is provided to patients where their food quality is an issue in relationship to their medical problem



1,530 kg



155 distributions

Moringa Powder
(a pure biological food supplement)
is provided to patients with a nutritional problem



113 kg



875 distributions


CHILDREN with DISABILITIES

 1.5 FTE

- ❖ Martha Nyirenda
- ❖ Ineke Selles

 € 7,019

- ❖ Masana Wa Africa
- ❖ Matunkha N

 1,130 patients 

- ❖ 886 Home Visits
- ❖ 255 Patients visiting Clinic

 Rumphi District Hospital (RDH)

- ❖ 271 Referrals

- ❖ Morfine: 5 patients



HEALTH PROGRAMS

Children with disabilities

Give special care to children with disabilities and information to their parents/guardians

We made visits to check the children medically and provided them with supporting materials, toys and specific tools were distributed. All children received a toy-doll for them personally.

Special days for children and their parents at Matunkha were organized at which the parents received training and information and the children were assessed in their current situation and some progress-expectations were discussed with and explained to the parents.

€ 1.05 = MK 3,200
per child per month



 0.3 FTE

- ❖ Ineke Selles
- ❖ [Inge Dernison]

 € 849

- ❖ Dernison & friends

 68 children

- ❖ 3 (5 day) trainings

 Mosquitonets

- ❖ 70 vulnerable children



HEALTH PROGRAMS

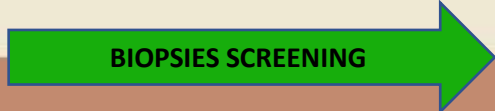
Moringa Garden

At Matunkha Centre we have an orchard with 1,300 Moringa trees.

Throughout the year we harvest the branches, wash them, strip the leaves of and dry these in specially constructed drying boxes. The trees are growing new branches continuously, which makes this an ideal product. The dried leaves are pounded into powder and handed to the Nurses to distribute to their patients.

Moringa Powder is a nutritional supplement full of vitamins, anti-oxidants and eight essential amino acids

€ 74 = MK 228,000 per kg moringa powder



 1 FTE

 € 1,596

 21,500 grams

 1,300 trees

 90,500 grams

❖ Mabvuto Chatumbwa

❖ Matunkha NI

❖ Of high quality Moringa powder

❖ Donated by Miracle Tree LLC



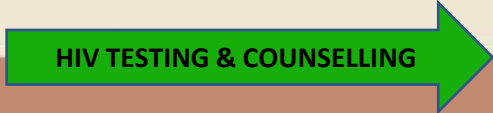
HEALTH PROGRAMS

Biopsies Screening

Our nurses experienced more and more that screenings for cancer were sent to government laboratories, but often it took a very long time and even more often they never came back with results.

When investigating and discussing with Rumph District Hospital, we came up with a laboratory that was willing and able to do these lab test properly, taking only 2 weeks. Now treatment plans can start, according to our limited treatment options, in good time, giving our patients a chance on survival.

€ 10 = MK 30,700
per biopsy



❖ Ineke Selles



€ 1,789

183 biopsies

❖ Albert Kok -
Toiletpapier



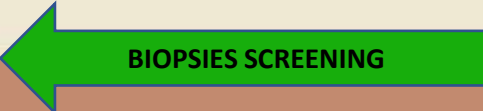
HEALTH PROGRAMS

HIV Testing & Counselling

The team regularly visits the villages and performs individual tests and counseling sessions, to identify as early as possible people that are HIV positive.

A major strategy in the fight against HIV and Aids is early identification, so infected people can start ART-treatment (next chapter) immediately. They stay in good health longer and the chance of infecting others is significantly reduced.

€ 5.30 = MK 16,300 per client



 0.5 FTE

 € 4,674

 880 clients

- ❖ Thomas Mabuwira
- ❖ Watson Malanga

- ❖ Masana Wa Africa
- ❖ Warmlopers
- ❖ Matunkha Netherlands

- ❖ 34 CBO outreaches
- ❖ 880 Tests performed
- ❖ 5 HIV positive [2 female, 3 male]



HEALTH PROGRAMS

Cervical Cancer Services

VIAA (Virtual Inspection with Acidic Acid)

Cervical Cancer is a widespread problem in Malawi, mainly because of the sexual behavior. If diagnosed in time, the treatment is simple and on the spot. It is diagnosed with the acid and in an early stage treated with gas (freeze). Advanced stages are referred to the hospital.

Many lives of (mainly young) women are saved though this simple and inexpensive program.

€ 5.00 = MK 15.300
per client



 **0.2 FTE**

 **€ 2,790**

 **561 Clients**

 **Partnering with RDH**

- ❖ Watson Malanga
- ❖ Thomas Mwabuwira
- ❖ 2 staff from RDH

- ❖ Masana Wa Africa
- ❖ Matunkha NI

- ❖ 25 Diagnosed positive & treated
- ❖ 24 Treated as precaution
- ❖ 38 CBO's & Villages visited

- ❖ 1 Referrals



HEALTH PROGRAMS

Prevention Mother-To-Child Transmission

Informing pregnant women on how to deliver and care for her child, especially focusing on preventing a baby to contract HIV if the mother is HIV-positive.

This program is focusing on all pregnant women in the villages and a percentage of them is actually HIV-positive.

€ 4.20 = MK 12,900
per pregnant woman



CERVICAL CANCER SCREENING

YOUTH CLUBS



0.3 FTE

- ❖ Thomas Mabuwira
- ❖ Watson Malanga



€ 1,811

- ❖ Masana Wa Africa
- ❖ Matunkha NL



431 Women

- ❖ 28 Group sessions
- ❖ 28 Villages



HEALTH PROGRAMS

Youth Clubs

Other than school, there is little to no entertainment for children and youth in the villages.

With this program we encourage them to start sporting competitions and we address issues like deforestation with them, providing them with background information and with trees to be active in fighting the problem of deforestation. Included in the program is teachings to the youth about HIV prevention.

€ 41 = MK 80,000 per club



 0.2 FTE

 € 1,980

 750 youth



- ❖ Watson Malanga
- ❖ Thomas Mwabuwira

❖ Masana Wa Africa

❖ 18 youth groups

❖ 4,500 trees



HOPE & DIGNITY

Community Welfare

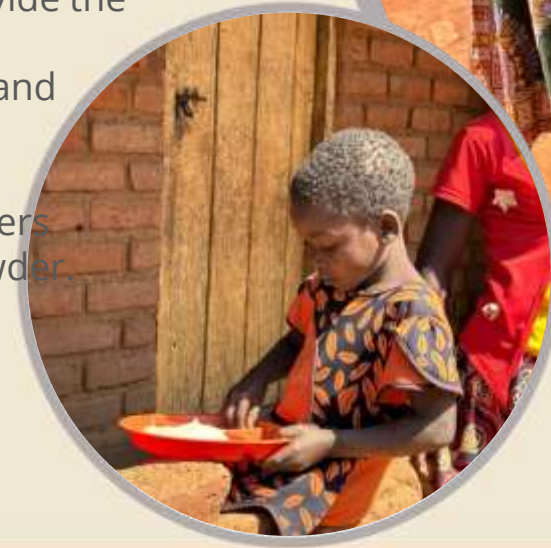
In incidental cases, we provide individual support to people or families in dire need

This support is always based on an assessment, where we check how the problems surfaced and who are in the first place responsible to assist. In case we can't identify anyone who can and will support, might it be family, neighbors, chiefs or church, we step in and provide the emergency help.

In most cases its food, roof materials, blankets and mosquito nets.

We also assisted some emergencies were mothers died and babies were in need of baby milk-powder.

€ 94 = MK 291,000
per family



SCHOOLFEEDING & ECD SERVICES

 0.5 FTE

 € 14,253

 153 Interventions

- ❖ Alice Chumbi
- ❖ Goodson Chavula

- ❖ Matunkha Netherlands



HOPE & DIGNITY

Schoolfeeding and ECD Services

In 2006 we had a serious hunger situation in Malawi and we started a breakfast-program for the children at our school.

We noticed a significant relation between well-fed children and their school results, so we continued the program since then and in the past years we were able to involve other schools in the same program, thanks to support from the Masana Wa Africa Foundation. The majority of the expenses are Farm Inputs which is used by the schools to grow their own food.

€ 1.95 = MK 6,000
per child



COMMUNITY WELFARE

LIVESTOCK MGMT & FOOD SECURITY



1.5 FTE

- ❖ Molley Mhango
- ❖ Goodson Chavula
- ❖ Alice Chumbi



€ 5,984

- ❖ Masana Wa Africa



3,078 children

- ❖ 5 Primary Schools
- ❖ 14 Community Based Childcare Centres
- ❖ 7 supported with farm inputs



HOPE & DIGNITY

Livestock Management & Food Security

Assist Community Animal Health Workers (CAHW), trained by Matunkha, so they can provide animal health care to farmers.

Introduce animals (goats, chickens and cows) and cassava or groundnuts to underprivileged families so they can improve their situation. They in turn give of the offspring or harvest to other families, according to a formal contract (pass-on system).



SCHOOLFEEDGIN & ECD SERVICES

 1 FTE


❖ Stanwell Mbale

 € 3,205

❖ Masana Wa Africa
❖ Simone Kiewiet

 9 CAHW

❖ Regular individual visits
❖ 4 Quarterly Meetings
❖ 11,863 treatments

 35 beneficiaries



EDUCATIONAL PROGRAMS

Matunkha CBCC

For many years now we have a Child Care Centre at Matunkha to take care of children between 2 and 6 years old, so they can play and learn together, while their parents/guardians do their daily duties.

We encourage the Community Based Organizations to also have this facility and use our CBCC as an example. The pictures are of our CBCC. It is now widely accepted that children attending these centers have a better start in live.

€ 5,33 = MK 10,320
per child per month



TENTHERE PRIMARY SCHOOL

 1 FTE

 € 2,733

 41 children

- ❖ Deliwe Mponda
- ❖ Maureen Sichinga

- ❖ Parents



EDUCATIONAL PROGRAMS

Tenthere Primary School

Providing quality education for children of all backgrounds.

With limited class sizes of 35, good accommodation, proper learning materials and enough motivated teachers; every child at our school has the best start of his/her educational life.

Children at our school come from the direct neighboring villages and we do enrollment based on the ratios of 50% OVC (Orphans and Vulnerable Children) and 50% girls

(school picture on last page of this report)

€ 7,50 = MK 23,000
per child
per month



Tenthere is among the best 100 primary schools in Malawi in terms of overall quality of results

MATUNKHA CBCC

SECONDARY SCHOLARSHIP FUND



13 FTE

- ❖ Rufus Nyasulu (Headm)
- ❖ Blessings Chriwa (HM)
- ❖ Peter Manyala
- ❖ Lazarous Kasambala
- ❖ Happy Nyasulu
- ❖ Salomy Kawonga
- ❖ Lameck Chisiza
- ❖ Steven Mfuni
- ❖ Maria Lipikwa
- ❖ Stella Ngwimbi
- ❖ Mercy Lusale
- ❖ Chifundo Gondwe



€ 24,649

❖ Matunkha Netherlands



274 in 8 classes

- ❖ 139 girls / 135 boys
- ❖ Pass rate standard 8 : 100%
- ❖ Selected for Secondary School: 27 out of 29



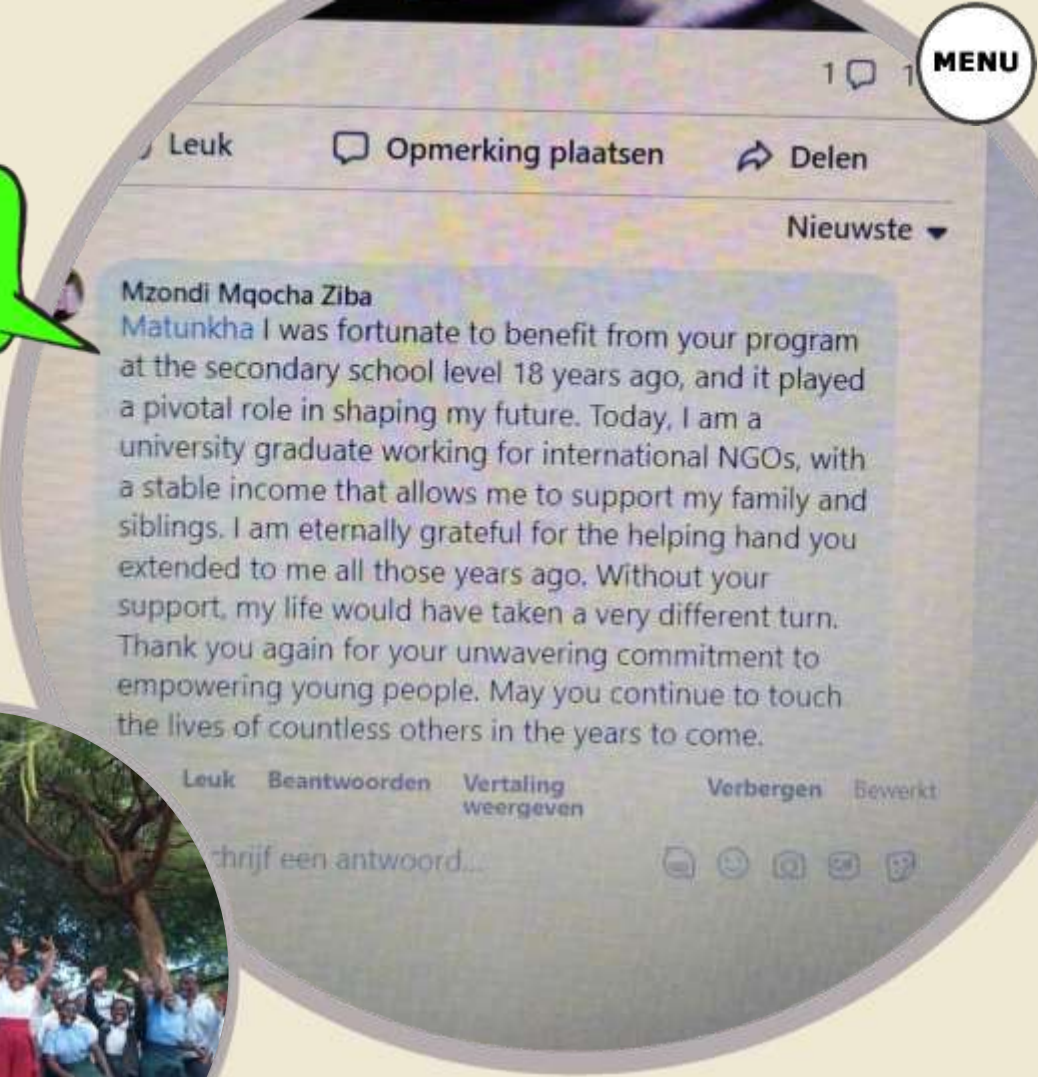
EDUCATIONAL PROGRAMS

Secondary Scholarship Fund

The pupils with the best results after exams for Primary School are selected for Secondary School.

Unfortunately, government and private schools are imposing school fees to be able to actually go to school, which is very difficult for many poor families. For many years now Matunkha provides these fees, based on individual assessments concerning the financial possibilities of the family.

€ 71 = MK 265,000
per student per year



 0.3 FTE

❖ Alice Chumbi

 € 5,371

❖ Masana Wa Africa
❖ Matunkha NI

 75 students

❖ 28 girls, 47 boys
❖ Graduated: 5 girls,
11 boys



EDUCATIONAL PROGRAMS

Youth Skills Orientation Centre

€ 95 = MK 290,000 per youth

After Primary School only 50% of the children get selected for Secondary School. For the others there is no other possibility for further education. To become a craftsman like a plumber or electrician, you need a Secondary School certificate.

At home, most of the children are not exposed to any craft at all, so the only way to learn anything is through school. In 2021 we did 2 Pilot Programs. Per program 8 youth (4 boys and 4 girls) are for 10 weeks at Matunkha and every week one of our craftsmen takes them with him/her on the job and shows/ teaches them the basics of his craft. In that way they are able to learn about their own abilities and interests. We encourage them to develop the craft where they feel attracted to. Since the program we regularly received reports on 36 youth who after and because of this program found (piece)work and found more possibilities to improve their lives. Very encouraging.



SECONDARY SCHOLARSHIP FUND

CRAFT & TRADE PROGRAM

 1.2 FTE

 € 2,865

 4 Groups

- ❖ Anthony Munthali
- ❖ Many staffmembers

- ❖ Vrouwen voor Vrouwen

- ❖ 20 Girls
- ❖ 10 Boys



EDUCATIONAL PROGRAMS

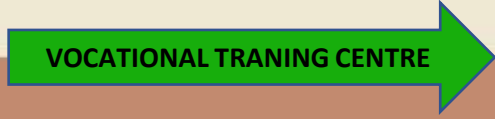
Craft & Trade Program

In 2022 we decided to change our Facilities Department, so make it possible for young people without formal education possibilities, to be at year at Matunkha, receive a basic income and be connected to one of our craftsmen to learn that craft while on the job.

This year we gave these opportunities to: Overton Kondowe, Hastings Kapira, Thomas Mwale, Ryimon Phiri, Lyson Ngulube, Brave Nyirendah, Robert Munthali, Wisdom Kamanga, Mable Tembo, Martha Mkandawire

They all did very well!! From their basic income they saved a little amount every month and Matunkha doubled it and, together with their teachers, they bought tools and equipment to start their professional live.

€ 43 = MK 113,000 per apprentice per month



1 FTE

❖ Staff from Facilities Management



€ 5,211

❖ Stichting WHI



10 beneficiaries



EDUCATIONAL PROGRAMS

Vocational Training Centre

Teach young people a craft with which they can sustain their own life and their family.

We are acknowledged by TEVETA as a official Formal Training Institute.
Per 1 June 2021 we started the first official formal training in Electrical Engineering Level 1.
In 2022 we ran level 1 and level 2 classes, partially overlapping. Now we are in a continuous process of schooling and certification.
In December 2024 we finalized building the facilities for the training for Auto Mobile Mechanic. We start the actual training programs per January 2025, but official certification from Government came months later, so in 2025 we ran the program without Government funding..

€ 309 = MK 950,000
per student per year



CRAFT & TRADE PROGRAM

 **4 FTE**
❖ William Tchuwa
❖ Harry Chirwa
❖ Joshua Nkhoma
❖ Phales Tcheleko

 **€ 12,052**
❖ Student fees
❖ TEVETA
❖ Matunkha NI

 **39 students**



Mbiriwizi Water System

Providing clean water through a gravity driven system to communal taps.

The water system is functioning since 1999 and in 2018 we made the transition to a water supply, fully paid by the users. Matunkha Centre is handling maintenance and financial management, paid from the income.

This year the expenses and income balanced and we were able to maintain a price of MK 350 per 1,000 liters. We managed to (re)build 6 aprons.

€ 0.09 = MK 185
per person
per month



MBIRIWIZI MULIMI WA NJUCHI

1 FTE

- ❖ Kondwani Mponda
- ❖ John Ojesi Banda

Expenses:
€ 5,105

- ❖ Families at 65 Communal Taps
- ❖ 22 Tenants and
- ❖ 12 Offices at Matunkha Centre

Income
€ 5,045

4,800 users
 44,256,000
liters of
water

6 Aprons
rebuild
€ 514



Mbiriwizi Mulimi wa Njuchi

The water for our Mbiriwizi Water System comes from a small river. The area around that river is under threat, because people go deeper into the forests to find firewood. Nico came with the idea to introduce a Beekeeping scheme in that area, so the bees form a natural protections and the people involved have an interest in preserving that area.

The project started in December 2024 with a loan and the interested people from the area paid a subscription fee to be part of this program, with future expectations of money to earn.

The people were trained by an experienced beekeeper and beehives were build at Matunkha. Just before the start of the rainy season, early 2025, the people put the beehives in place in the Area. This year we had only very little honey-harvest and some start-up problems, but we hope all will go better and stabilize in 2026



MBIRIWIZI WATER SYSTEM

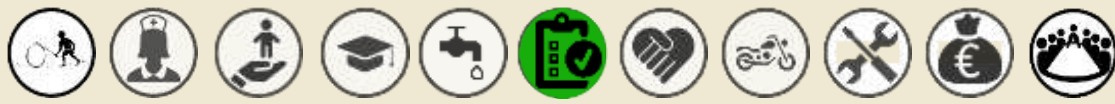


0.1 FTE



€ 0

- ❖ Nico Dernison
- ❖ Thomas Mwabuwira



SPECIAL PROJECTS

MENU

Christmas Parcels

€ 12.87 = MK 40,000 per parcel

We were very lucky and happy to receive again a donation from VVG Ede for Christmas parcels.

The content of the parcels for staff is chosen by a delegation of the staff.

Our Community Department also selects volunteers from the communities who also receive a Christmas parcel and each year we decide on a different group. This year they choose to encourage the Youth Groups with ingredients for a shared meal and the Prevention Volunteers with individual parcels.



0.1 FTE

❖ The Welfare Committee

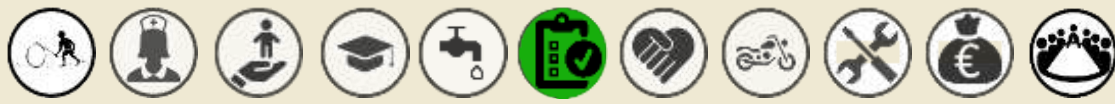


€ 1,390

❖ VVG Ede
❖ Welfare Fund



❖ 53 Staff & 10 Apprentices
❖ 42 Volunteers (PMTCT)



SPECIAL PROJECTS

Loan Fund

In 2006 Malawi was struck by a serious famine. Food was available, but very expensive. At Matunkha we received \$ 1,000 from the Ferguson Family and management decided to initiate a Loan Fund for staff to deal with sudden financial problems (food, fertiliser, funerals, etc).

Since then, the Loan Fund assisted staff with emergencies and they repaid the loans with decutions from their salary.

The interest was decided at 5% and from then onwards, the Loan Fund proved to be a revolving fund, because with that interest, the inflation in Malawi was covered.

€ 38 = MK 118,000 per loan

2025 REPORT MATUNKHA LOAN FUND

	Expenses	Income
Opening balance		2,635,297.41
Given out loans [loans to staff]	17,807,000.00	
Received repayments loans		17,807,000.00
interest		1,407,351.00
Banking expenses	8,187.59	
Bank interest		40,937.90
	17,815,187.59	19,255,288.90
Closing balance		4,075,398.72



CHRISTMAS PARCELS

NYIKA TRIPS: STAFF & STANDARD 7

0.1 FTE

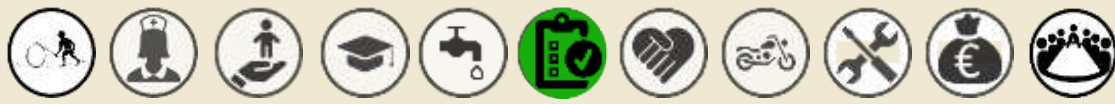
€ 1,327

63 beneficiaries

151 loans

- ❖ Alick Harawa
- ❖ Tiem Selles

- ❖ Revolving fund



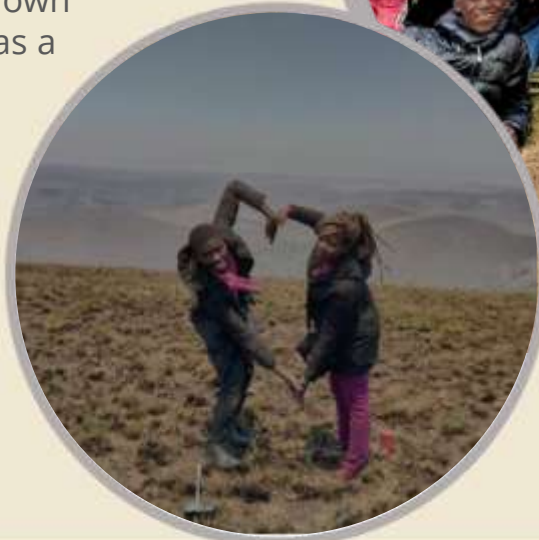
SPECIAL PROJECTS

Nyika Trips: Staff and Standard 7

Staff was really eager to see Nyika at least once. Also for the learners at our school Management thought is good to organize once a trip for them. The best timing for that is when they are in Standard 7.

So the staff started organizing trips themselves, with financial support from Henk & Mirjam and from Management (transport). This year 2 trips have been done with 42 people in total.

This year we did the Schooltrip in June and with our own Landcruisers, because going by bus is too risky. It was a very good trip and everybody enjoyed.

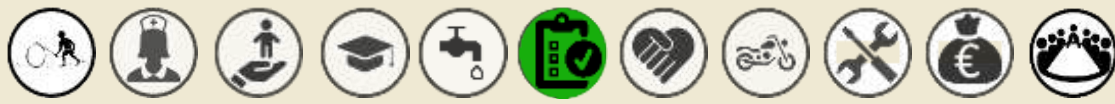


€ 970

€ 644

- ❖ Welfare, Management Teachers

- ❖ Staff & Management
- ❖ Henk & Mirjam
- ❖ Betuwse Broeders Fietstocht
- ❖ Winschoten Run 2024



SPECIAL PROJECTS

30th Celebrations

Matunkha was founded in 1995, so this year marked 30 years Matunkha. That needed proper celebrations!!

So, we received 26 guests from Holland in April; all with substantial history with Matunkha and had a proper party on 28 April. We gifted over 100 bicycles to our loyal volunteers and 64 to our staff. Including our apprentices and Government teachers.

And after that, we had a more traditional celebration on 11 July, where our staff had a nice drama about the history of Matunkha. This was initialized and organized by our friends from Holland: Erik & Jennine, with their sons Elias & Jonah.

It was all very good!!!



← NYIKA TRIPS: STAFF & STANDARD 7

HUNGER RELIEF PROGRAM →



❖ Everybody



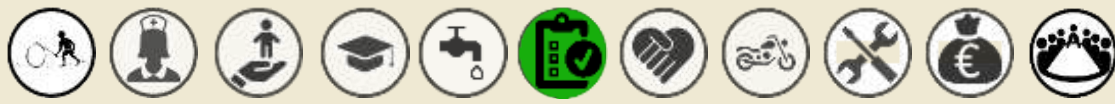
€ 7,980

- ❖ Matunkha Centre (Profit VFM 2024)
- ❖ Matunkha NI



€ 16,000: 170 Bicycles

- ❖ Wellwishers from Holland



SPECIAL PROJECTS

Hunger Relief Program

Rains were poor this year and predictions were early that food was going to be a problem. A real problem..

We communicated with Matunkha Netherlands quite early, as we know that the further we progress in the year, the more expensive the maize will. This made it possible to do proper fundraising in Holland and enabled us to buy maize in bulk amounts for prices that were still reasonable. Distribution started in December, but the majority of the hand-outs will take place in the months January-April, as families are running out of their food and the new harvest is not yet available..

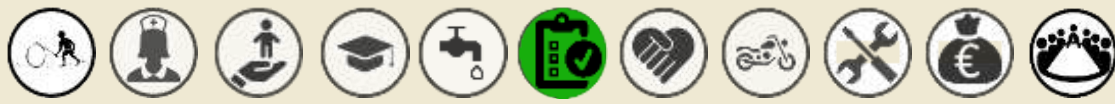


 **0.5 FTE**

 **€ 9,530**

❖ The whole Community Team

❖ Matunkha Netherlands



SPECIAL PROJECTS

Classroom Upgrades & Teachers Staffroom

With all the new developments that are always popping up, we sometimes have little attention for existing programs.

The classrooms from our Primary School have been build between 1997 and 2005. And that was visible... So Management decided that we needed to do some renovation, to make them proper for year to come. It was quite simple: plastering the walls and give them a nice, light, paint. Make some appliances to display information and redo the blackboard. So far we have done 5 of the 8 classrooms and the next big holiday we're going to finish.

The same was true for the teachers: they are using the (small) library as their meeting place and place to check papers. We decided tot connect two classroom that we build under 90 degrees from each other: so we only needed to make a connecting wall and roof it. That has been done and in 2026 we're going to finish.



HUNGER RELIEF PROGRAM



❖ Facilities Team



€ 1,666

❖ Winschoten Run 2025



€ 3,164

❖ SSBCO



Volunteers Facilities

We use our previous tourist facilities mainly for volunteers, students, family and guests from Holland.

A team of four young men take care of our guests. They cook, serve, clean and wash. This year we had a good number of visitors, so it was enjoyable.

There was no profit, mainly because the guests that came for the anniversary were hosted by Matunkha.



3 FTE

- ❖ Anthony Munthali
- ❖ Gibson Kaira
- ❖ Wisdom Kachali
- ❖ Hastings Kapira (CA)



**Expenses:
€ 11,964**



**Income
€ 11,611**

- ❖ 42 guests: Henriette | Gerwin & Emme | Henry & Peter-Jan & Sander | Vera | Jacolien & Egbert | Jorrit & Hilde, Joshua, Levi, Hugo, Isa | Bert & Mathilde | Dorothy & Aart | Barend & Trudy, Chiara | Esther & Gertjan | Heleen & Johan | Marleen | Erik & Jennine, Elias, Jonah | Evert & Ina | Dennis & Tieneke | Frank & Francisca | Elsbeth & Bart, Anne-Lyn, Lysanne | Jan



Transport Section

Serve the Centre with adequate and safe transport to carry out the programs and projects

Reliable and safe transport is vital for our operations. Our catchment area is almost completely rural, with very few tar roads, so the availability of sturdy cars and motorbikes is essential.

Five years ago we started a revolving system for our motorbikes in which we buy them new, use them for 15.000 km and then replace with a new one. Halve of the necessary sum is from the sale and the other halve comes from use in the programs and activities. This year we replaced 2 motorbikes and were able to add one motorbike for the Community Nurse. We now have 8 motorbikes in our pool.

In 2006 we received a small tractor from Holland for use on the Centre. This reduces the strain on our cars for local transport and we give it good care.

And in 2025 we started using the Fatbike that Nico arranged for us in Holland. We're using it for Home Based Care en for Admin and it saves us many km on a motorbike. Maintenance is easy and electricity is cheap and sometimes free (solar)



 **2 FTE**

❖ Paul Mfuné
❖ Matandalo Gondwe

 **€ 14,291**

❖ Paid by Projects,
Programs &
Departments

 **8**

❖ 51,296 km

 **2**

❖ 15,664 km

 **1**

❖ 19,932 km





❖ 3,206 km



FACILITIES MANAGEMENT

Facilities Management

Houses, Offices, Renovations & Security

The Matunkha Centre is a big complex; it covers almost 10 ha with houses & offices and 30 ha of mountain and bushy area..

There are lots of houses (22), offices, classrooms, workshops, etc. Most of these buildings are more than 10 years old, so maintenance of the buildings, the roads, the landscaping and the drains is a big issue for us.

Fortunately the Matunkha foundation is supporting us in that. In the department in every craft we have one professional, who gets 1 junior for that year. The junior can develop himself in that craft, to earn enough skills to support

himself working in that craft for the rest of his life. Next year, this process starts over again with another youth who gets a chance.

A lot of work has been done, but for the scope of this report, we'll not go into further detail.



Houses & Offices

9 FTE

€ 3,772

❖ Matunkha NI

Income
€ 5,657

❖ Tenants & departments

Expenses
€ 12,510



FACILITIES MANAGEMENT

Security

Under leader John Mabaso, our security team is alert 24 hours per day, 7 days per week, 52 weeks per year. They make sure that all is safe for the workers and tenants, that nothing gets stolen and the cars and motorbikes are properly registered. This year we had only minor incidents, which is absolutely great, considering the number of activities and the size of our plot.



9 FTE

- ❖ John Mabaso
- ❖ Edwell A Chiona
- ❖ Solium Ngambi
- ❖ Walinase Sichinga Kaponda
- ❖ Christina Nyirongo
- ❖ Mwandira Olms
- ❖ Charles Mkandawire
- ❖ Wilson Phiri
- ❖ Kenneth Kalua



€ 8,865

❖ Matunkha NI



Finances

ADMINISTRATION

DONOR / INCOME OVERVIEW		
Matunkha Netherlands	Centre Development, general support& small projects (€ 1,000 and below)	€ 129,290
Masana Wa Africa	HIV Prevention & Community Development (38,000 USD)	€ 21,655
via Matunkha Netherlands (above € 1,000) :		
Suzanne & Lisette	Support Polytechnic [Annie]	€ 1,518
Albert Kok – Toilet papier	Cancer Screenings 2025	€ 5,000
Matunkha nl	Renovations Staff Houses	€ 1,500
Vrouwen voor Vrouwen	YSOC	€ 1,296
SSBCO	Staffroom Teachers	€ 3,000
Betuwse Broeders Fietstocht 2024	Apprentices	€ 750
Winschoten Run 2024	Standard 7 Schooltrips	€ 3,500
Winschoten Run 2025	Upgrade classrooms	€ 4,054
Sponsoraction	Purchase of Maize	€ 9,934
Local Income:		
Multiple local activities & Programs		€ 31,774



AUDITED FINANCIALS			
	Total in MWK	Estimate in Euro	Estimate in Dollars
Opening Balance	5,434,498	€ 1,770.13	\$3,152.18
2025 Income	560,966,129	€ 182,718.53	\$325,377.53
2025 Expenses	559,656,047	€ 182,291.81	\$324,617.64
Closing Balance	9,831,230	€ 3,202.24	\$5,702.41

BOARD & MANAGEMENT



2.5 FTE

- ❖ Alick Harawa
- ❖ Tiem Selles
- ❖ Winald Kayange
- ❖ Beatrice Chawinga



Board & Management

BOARD & MANAGEMENT

This year the Management has been running the Centre with minimal disturbances, They had 6 Meetings-with-agenda and in between had 20 small meetings to discuss minor issues. In July we had a very special meeting with the Matunkha NI Board about future developments at Matunkha. On the small picture; top fltr Peter Tengani, Dennis de Groot (chairman), Rufus Nyasulu, Goodson Chavula and Ineke Selles. Bottom: Tiem Selles and Frank Sturuss.

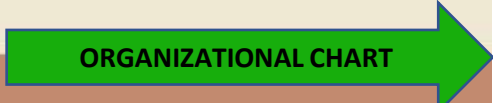
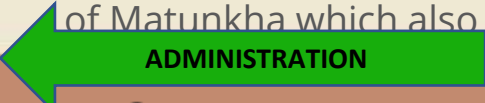


The Board (on the big picture; fltr Mr. Amon Manda, Mr. Malumbo Jere, Mr. Muyanga Soko, Mrs. Jessie Nyirenda) has had 5 meetings and all went in good harmony.

All meetings were based on a topic of the Centre and this year these topics where discussed:

- ❖ Matunkha Organization & Finances (2024)
- ❖ Palliative Home Based Care & Community Welfare
- ❖ Mbiriwisi Water System
- ❖ Tourism: Pro's and Cons
- ❖ Changes for 2026

Also we had 2 celebrations for the 30th Anniversary of Matunkha which also were attended by the Board.



MANAGEMENT



BOARD MEMBERS

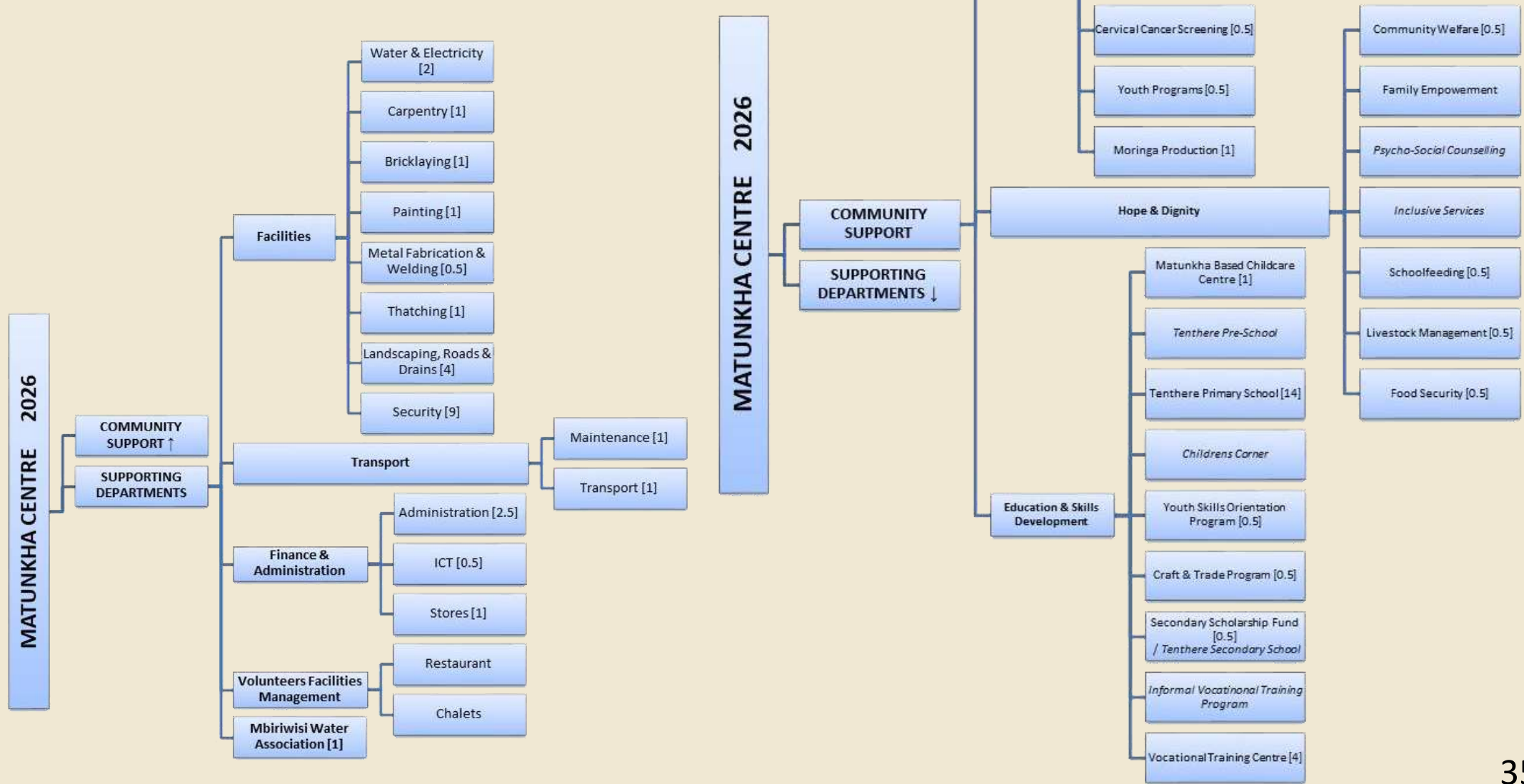
- ❖ Goodson Chavula - Community Programs Manager
- ❖ Tiem Selles - Finance Manager
- ❖ Peter Tangani - Facilities Manager
- ❖ Rufus Nyasulu - Headmaster Tenthere Primary School

- ❖ Mr. A. Manda
- ❖ Dr. S. Manda
- ❖ Mr. M. Soko
- ❖ Mts. J. Nyirenda [new]



Organizational Chart


BOARD & MANAGEMENT





Thank you!!!

Matunkha Development Trust
Community Development
Rumphi,
Malawi

 **Matunkha**

